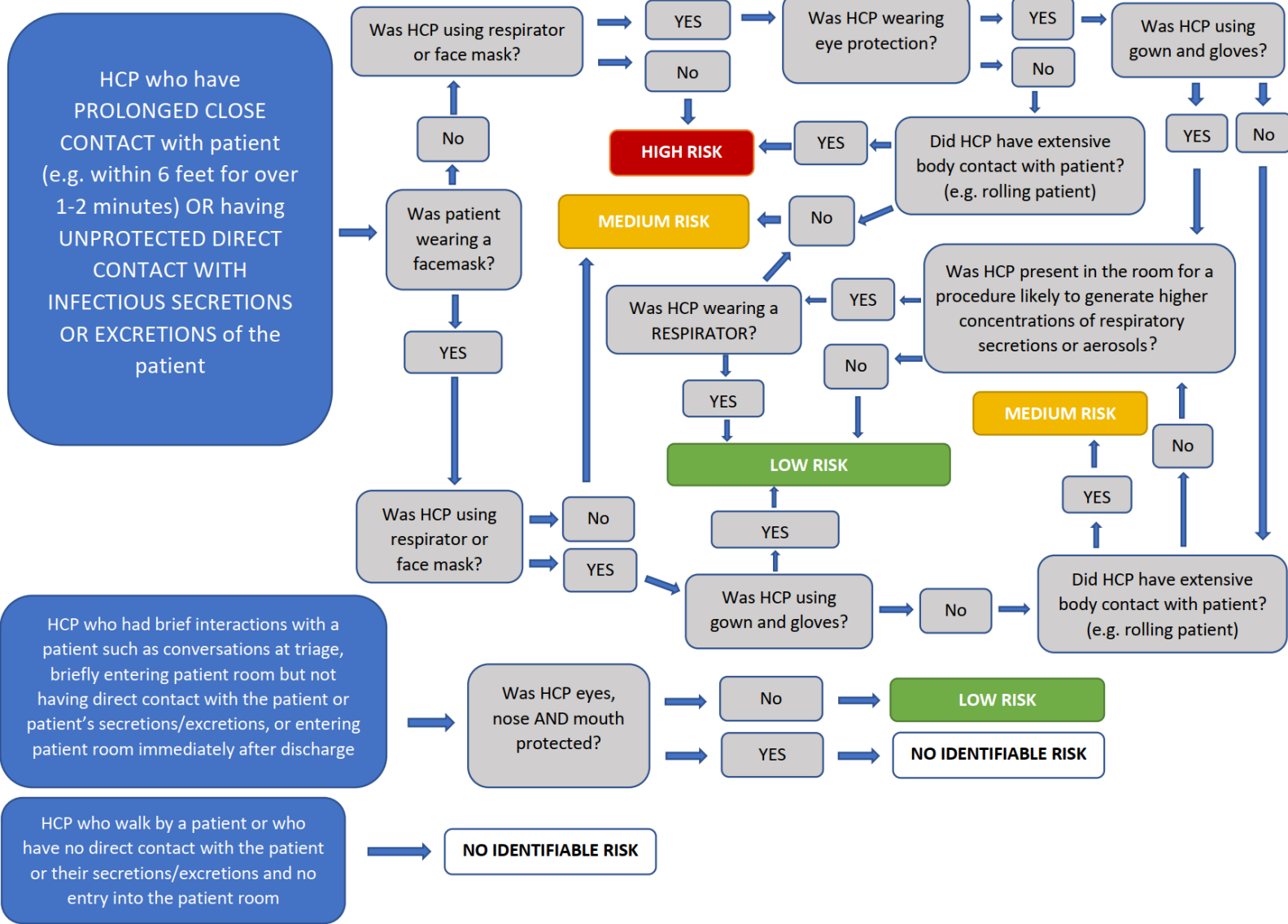


Healthcare Personnel (HCP) EXPOSURE to Confirmed COVID-19 Case Risk Algorithm



Risk Exposure Category*	Recommended Monitoring*	Work Restrictions for Asymptomatic HCP**
HIGH RISK	ACTIVE Monitoring until 14 days after the last potential exposure	Exclude from work for 14 days after last exposure
MEDIUM RISK	ACTIVE Monitoring until 14 days after the last potential exposure	Exclude from work for 14 days after last exposure
LOW RISK	SELF-MONITORING with delegated supervision until 14 days after the last potential exposure	NONE
NO IDENTIFIABLE RISK	NONE	NONE

For this guidance, CDC defines HCP as all paid and unpaid persons serving in healthcare settings who have the potential for direct or indirect exposure to patients or infectious materials, including body substances; contaminated medical supplies, devices, and equipment; contaminated environmental surfaces; or contaminated air. For this document, HCP does not include clinical laboratory personnel.

Procedures likely to generate higher concentrations of respiratory secretions or aerosols include, but are not limited to, cardiopulmonary resuscitation, intubation, extubation, bronchoscopy, nebulizer therapy, or sputum induction.

If during monitoring the person develops any fever (measured temperature ≥ 100.0 °F or subjective fever) OR respiratory symptoms consistent with the 2019 Novel Coronavirus infection (e.g. cough, shortness of breath, sore throat) they should immediately self-isolate (separate themselves from others) and promptly notify their local or state public health authority and healthcare facility for further evaluation.